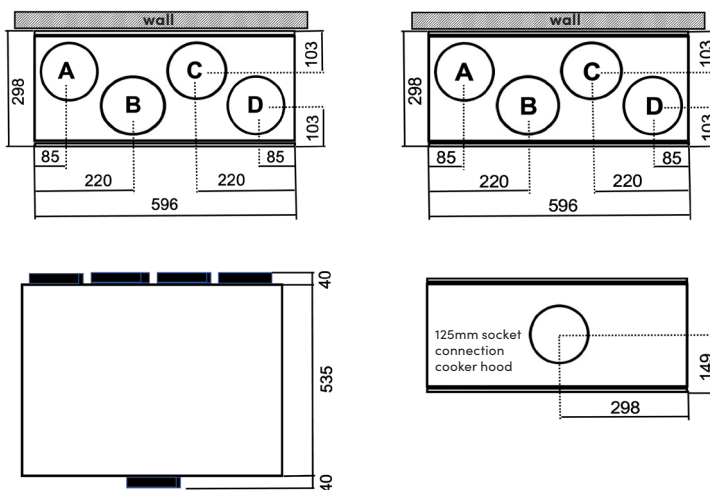




**Ventilation unit  
A70T EPP EvoControl  
MPO**

# EvoAir A70T EPP

VENTILATION UNIT • ARTICLE NUMBER 30074 (ALUZINK) / 30075 (WHITE)



## Technical data • EvoAir A70T EPP

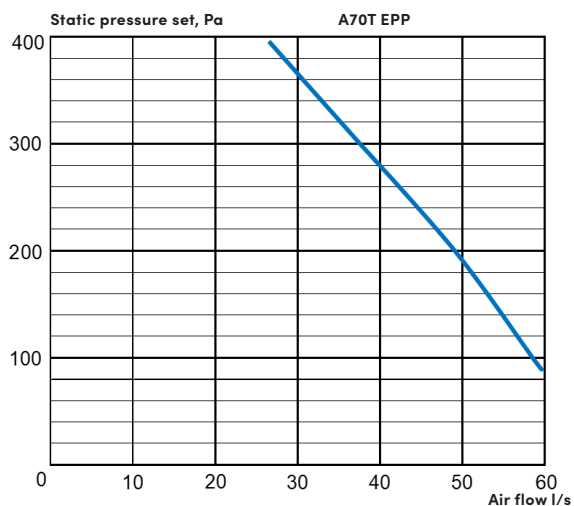
Flow area (l/s)	10-60
Width (mm)	596
Depth (mm)	298
Height (mm)	535
Weight (kg)	26
Duct connection, socket (mm)	5 x 125
Power electric battery, built-in (W)	200-800
Power Preheater, accessories (W)	200-1250
Fan power (W)	2 x 85
Electrical connection (10A)	1 x 230V

## EvoAir A70T EPP

## Measure (mm)

A	596
B	220
C	85
D	298
E	103
F	535
G	40
H	298
I	149

Detailed technical data is obtained from the calculation program a-calc.



# Installation A70T

Installation and commissioning must be done by a person with sufficient knowledge for the industry for a good function.

The right or left variant is determined by mounting the unit rotated. The unit is mounted against the wall using the enclosed suspension angle.

During kitchen installation, the unit and kitchen hood are mounted as separate units, which simplifies the installation. The kitchen hood is connected to the unit with a 125 mm hose (hose not included). Electrical connectors are connected to the underside of the unit.

**Basic airflow must not be taken via the kitchen hood.**  
**Separate exhaust air diffusers are installed in the kitchen.**

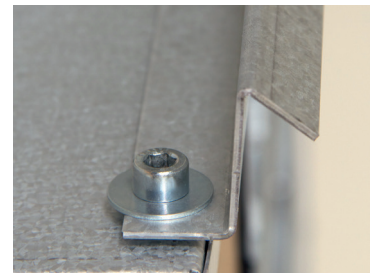
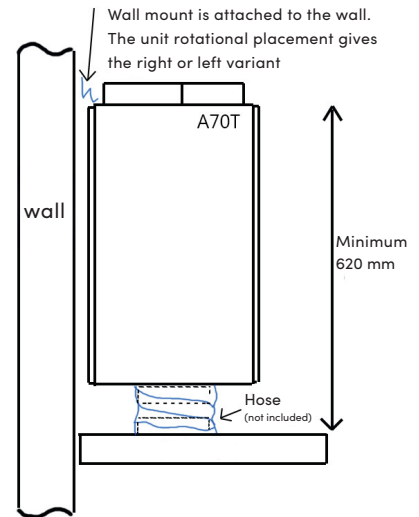
The minimum construction height between the upper edge of the kitchen hood and the upper edge of the unit is 620 mm.

This mounting method provides more space above the unit for duct adjustment, flexible mounting and lower weight.

## Electrical connection

The unit is internally pre-connected and equipped with a cord. The plug is connected to a grounded socket 1x230 V, 10 A slow fuse. The control panel is connected to the unit with a flat cable, length 5 m with quick connectors.

When the kitchen hood is used, connect the hood's electrical connectors to the underside of the unit. Connectors for lighting and control signals are connected to the unit's connectors.



Kitchen hood white  
251-A70T 600mm



Kitchen hood stainless  
251-A70T 600mm



Kitchen hood 392-A70T  
600mm



# EvoControl MPO

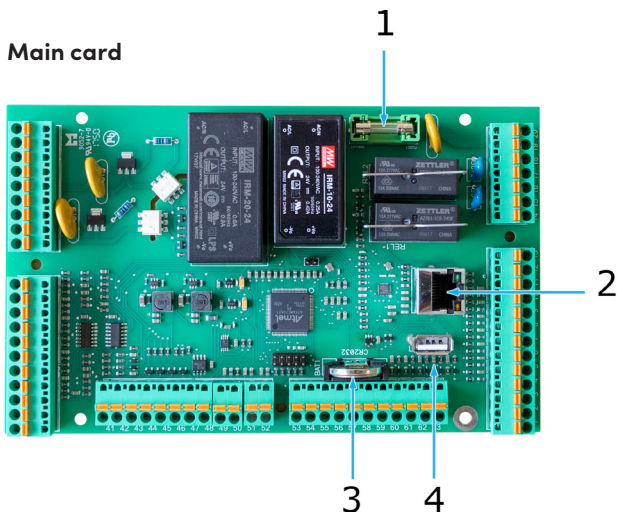
## Quick guide

EvoControl MPO consists of the following parts:

### Display



### Main card



1. Fuse 5x20mm, 200mAT, 230VAC.
2. Network socket RJ45
3. Battery CR3225
4. USB connector

### Included

5m modular cable (max length 25m)

### Mounting the display:

The control panel is mounted directly on a flat surface.

The cable can be pulled up, down or straight back. For mounting downwards, the back cover must be unscrewed and turned. Connect the supplied wiring (crossing modular cable) to the connector on the bottom of the control panel.

Open the doors on the front of the control panel and screw to the ground. Close the doors again.

## Change operating mode

### Step 1:

To change the operating mode, highlight line and press **Enter**.



### Step 2:

Select new operating mode with Up Arrow and Down Arrow and confirm with **Enter**.



## Adjust airflows.

### Step 1:

Select "Menu" and press **Enter**.



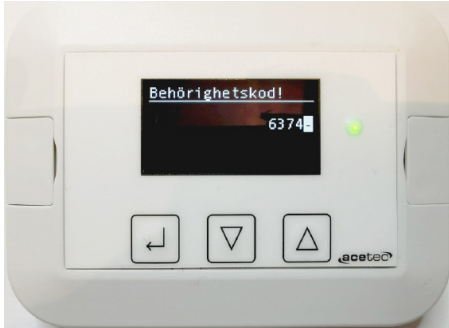
### Step 2:

Scroll down to "Settings" and press **Enter**



**Step 3:**

Enter authorization code **6374** (8990 for advanced) and press Enter. Enter one number at a time, this is done with the Up Arrow and Down Arrow and confirmed with Enter. Confirm the entered code by pressing Enter when "-" is highlighted

**Step 4:**

Select "Fan" and press Enter.

**Step 7:**

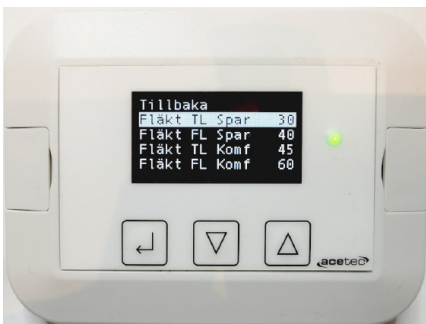
Confirm by selecting "Save = Yes" and press Enter.



Repeat steps 5-7 to change them parameters you need.  
Press Back to get to the start menu.

**Step 5:**

Select the flow you want to adjust and press Enter.

**Step 6:**

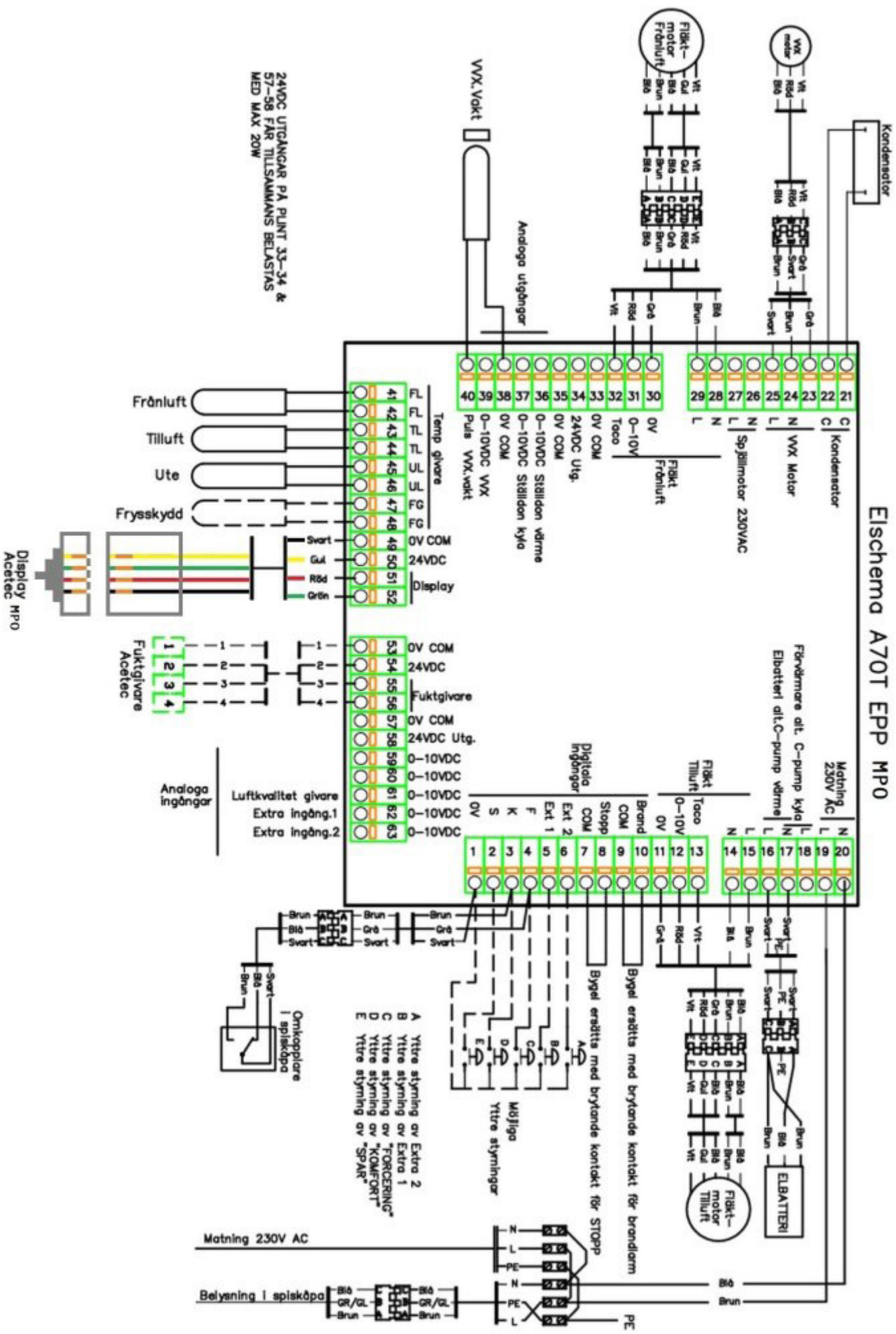
Increase or decrease the value with the Up Arrow or Down Arrow and then press Enter.



**A70T with kitchen hood, parameter 470 "Priority order" under "Functions" may need to be changed!**

**A70T with kitchen hood 251, "Last input" must be selected.  
A70T with kitchen hood 392, "Prio" must be selected.  
A70T with cooker hood Monolit "Prio" should be chosen.**

# Elschema A70T EPP MP0



24VDC UTGÅNGAR PÅ PUNKT 33-34 & 57-58 FÅR TILLSAMMANS BELASTAS MED MAX 20W

## Service & Maintenance

Perform service 2 times / year or if necessary

Disconnect the electrical connection before servicing by unplugging or disconnecting the fuse.

Make sure that no person can connect the unit to electricity during work.

Loosen the inspection hatch's 4 screws with 5mm Allen key.

Allen key included with delivery.

Remove old filters by pulling them straight out.

Vacuum the inside of the unit and clean with a mild detergent.

Install new filters, a total of 2 filters are required per unit.

To facilitate internal cleaning, fans and heat exchanger units equipped with electrical connectors can be removed from the unit. Disconnect electrical connectors and pull these components straight out of the unit.

In the event of a fault or malfunction, contact the operator of your facility.

---

## Important to keep in mind when installing

- Installation and commissioning must be done with sufficient knowledge for the industry, for a good function.
- If the system is not put into operation immediately, all duct connections must be sealed inside the unit to prevent damp or cold air from entering the unit, which can cause moisture damage.
- All operating modes must be adjusted (Save, Comfort and Forced)
- The control panel must be positioned so that the user has access and an overview in the event of any alarms.
- The user / person responsible for the system must be informed about the location of the control panel and its functions.
- The installer must submit manuals and warranty certificates to the user / person responsible for the system.
- The product must be registered at <http://registrera.acetec.se> for the warranty to apply.

---

**Remember to register your  
product on [acetec.se](http://registrera.acetec.se)**



 **Email**

---

[sales@acetec.se](mailto:sales@acetec.se)

[www.acetec.se](http://www.acetec.se)

 **Phone**

---

010-28 80 110

+ 46 10-28 80 110

 **Address**

---

Fabriksgatan 9

942 36 Älvsbyn, Sweden